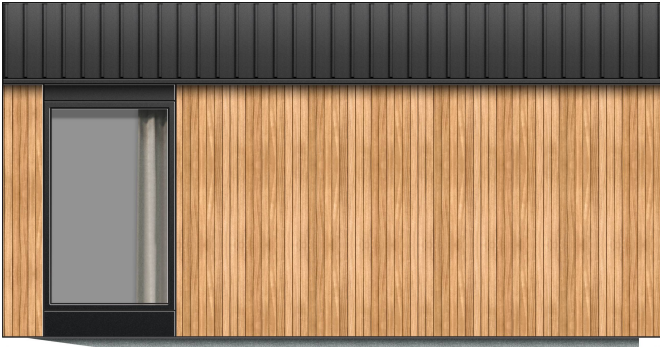




Tiny Home ROMANTIC

Facade:



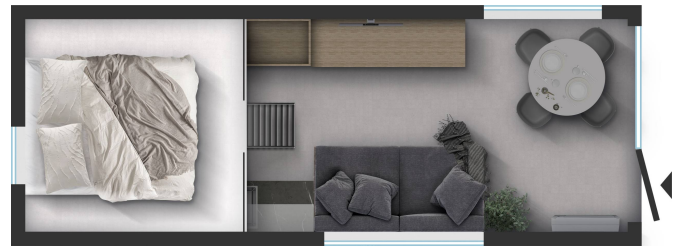
Facade 2:



Layout:



Layout 2:



A1 GENERAL

Area	22,50
Number of beds	2+1
Number of bedrooms	1
Number of bathrooms	1
Height	3,90
Length	7,50
Width	3,00

B1 CHASSIS

100% galvanised steel tube 100/100/5 mm with leveling feet	X
--	---

B2 FLOOR

Vynil flooring	X
Bitumen floor protection	X
Structural Insulated Panels SIP Floor 100mm (R=2,39 m2K/W)	X

B3 EXTERIOR WALLS

Structural Insulated Panels SIP 100mm (R=2,39 m2K/W)	X
Decorative Cladding: Larchwood Blackline vertical	O
Decorative Cladding: Larchwood vertical	X
Decorative Cladding: Vestis RL 7016 Stucco	O
Other Three Sides: Larchwood Vertical	X
Other Three Sides: Larchwood Blackline vertical	O

B4 WINDOWS AND DOORS

Tinted windows in bathrooms	X
External installation of windows and doors	X
Interior wooden window trim	X
PVC windows and doors with termopan glass - anthracite outside and inside (U=1,3 W/m2K)	X
Swing entrance door with security glass and door holder	X
Panoramic sliding entrance door with security glass	O
Mosquito nets on all windows - matching colour of windows	O
Rolo shutters on bathroom windows	O
Master cylinder	O

Master key (3 pieces)	O
-----------------------	---

B5 ROOF AND CEILING

Duo-pitched Roof	X
Roof construction class C (250 kg/m ²)	X
Structural Insulated Panels SIP Roof 130mm (R=3,15 m ² K/W)	X
Roof plates Vestis RAL 7016 Stucco	X
Gutters	X
Vertical draining pipes - matching colour of windows and doors	X

C0 INTERIOR

Furnishing Decor - STANDARD		FOREST 2022
Textile Combination - STANDARD		FOREST 2022
Dimout curtains in all rooms except bathroom and toilet		O
Seating cushions in living room		X
Interior doors 40 mm with ALU doorframes		X
Door stopper		X
Soft close for furniture		X
Double interior separation walls		X
Bathroom and toilet door with lock		X
Pull-out metal ladder		X, BLACK
Metal doorhooks in black colour		X
Metal fence on mansard		X, BLACK
Internal skirtings		X
Inner cladding for walls		X
Fire extinguisher (1kg)		O
Fire blanket		O
Smoke detector		O

C1 LIVING ROOM

Cushions in living room	O
Dinning table	X
Chairs	X
Extendable designer comfortable sofa	O
Foldable bed in living room	O
Hangers in living room (2 pcs)	X

Mirror in living room	X
Multi-purpose wardrobe in living room	X
Wardrobe with drawers in living room	X
Wardrobe in living room	X
TV module in living room (1x TV socket, 2x el. socket)	X
UTP socket in living room	O
Wall lightning in living room	X
Ambiental LED lightning in living room	X
Adria Bluetooth sound system	O

C2 KITCHEN

Glass ceramic hob with 2 burners	X
Induction hob with 2 burners	O
Built-in extrator hood	X
Granite sink without drainer	X
Built-in fridge with freezer	X
Built-in dishwasher 450 mm	O
Pre-preparation of installations for built-in dishwasher	X
Microwave oven	O
Kitchen backsplash: Decorative laminate	X
Electrical sockets over the kitchen counter (2x)	X
Built-in ceiling spot LED lights in kitchen	X
LED lightning above kitchen counter	X

C3 MASTER BEDROOM

Double bed with slatted bed base	160 X 200
Foam mattresses (25 kg/m ²) in master bedroom	X
Foam mattresses (35 kg/m ²) in master bedroom	O
Reading LED lights in master bedroom	X
USB charging modules in master bedroom (2 x C, 2 x A)	O
Electrical socket in master bedroom	X
Wall mounted light in master bedroom	X

C6 BATHROOM

Shower cabin with low profile tray and decorative PVC shower wall	X
Shower rail with sliding shower holder	X

Shower decorative PVC wall	X
Extra shelves in bathroom	X
Ceramic toilet with toilet seat	X
Toilet roll holder	X
Hangers in bathroom (2 pcs)	X
Hairdryer in bathroom	O
Built-in toilet tank with saving function connected to wash-stand	X
Built-in ceiling spot LED lights in bathroom	X
Electrical socket in bathroom	X
Fan wit humidity sensor on light switch and timer delay in bathroom	X
1	

D1 WATER AND GAS

External connector to water facilities with pressure regulator	X
PVC water pipes Speedfit®	X
Internal access to water heater - door with lock	X
Electrical water heater 80l	X
Insulated water pipes with electrical heating	X

D2 ELECTRICITY

External connection 1 x 32A, 1P+N+E	X
Black flush installations, sockets and switches	X
Key lock	O

D3 MULTIMEDIA

LED TV 32 inch	O
TV holder with double fold function	O
LED TV 43 inch	O

D4 HEATING AND COOLING

Preinstallation for Airconditioning in living room	X
Airco sensors for entrance door	O
Airco sensors for all windows except bathrom	O
Electrical heater in living room	O
Electrical heater in master bedroom	O
Electrical towel heater in bathroom 1	X

Electrical underfloor heating system Ebecco ® in all rooms	O
Air-conditioning black with fix wall thermostate - mono split	O

E1 EXTERIOR EQUIPMENT

External socket - matching colour of windows and doors	X
LED strip above entrance	O
Exterior LED lightning	X
Terrace with other equipment	O

Legal Notice

The information on this website is provided "as is" and without warranty of any kind, expressed or implied, including (but not limited to) any implied warranties of merchantability and non-infringement of third party rights. While the information provided is believed to be accurate, it may include errors or inaccuracies. In no event shall Adria Home be liable to any person for any special, indirect or consequential damages relating to this material, unless caused by gross negligence or intentional misconduct. The purpose of this website is illustrative. The website may show visuals which may include some elements not belonging to the standard equipment or portray products which may not be available in all markets. Products may change in terms of technical specification and commercial details and in relation to specific regulations. You are advised to always contact your selected Adria representative to obtain all detailed information prior to purchasing.

Copyright

Copyright© Adria Home Ltd., Črnomelj, Slovenia 2024/2025. All rights reserved. The text, images, graphics, sound files, animation files, video files, and their arrangement on the Adria Home website are all subject to copyright and other intellectual property protection. These objects may not be copied for commercial use or distribution, nor may these objects be modified or reposted to other sites. Adria Home website may contain images whose copyrights are attributable to third parties.

Adria Home Ltd.
Kanižarica 135, SI-8340 Črnomelj, Slovenija,
+386 (0) 7 35 69 100
info@adria-home.com

adria-home.com

#adriahome
#adriaglamping

