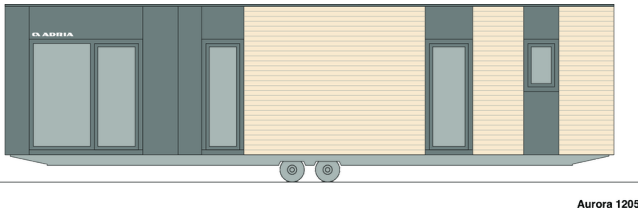




Aurora 1205 C21

Facade:



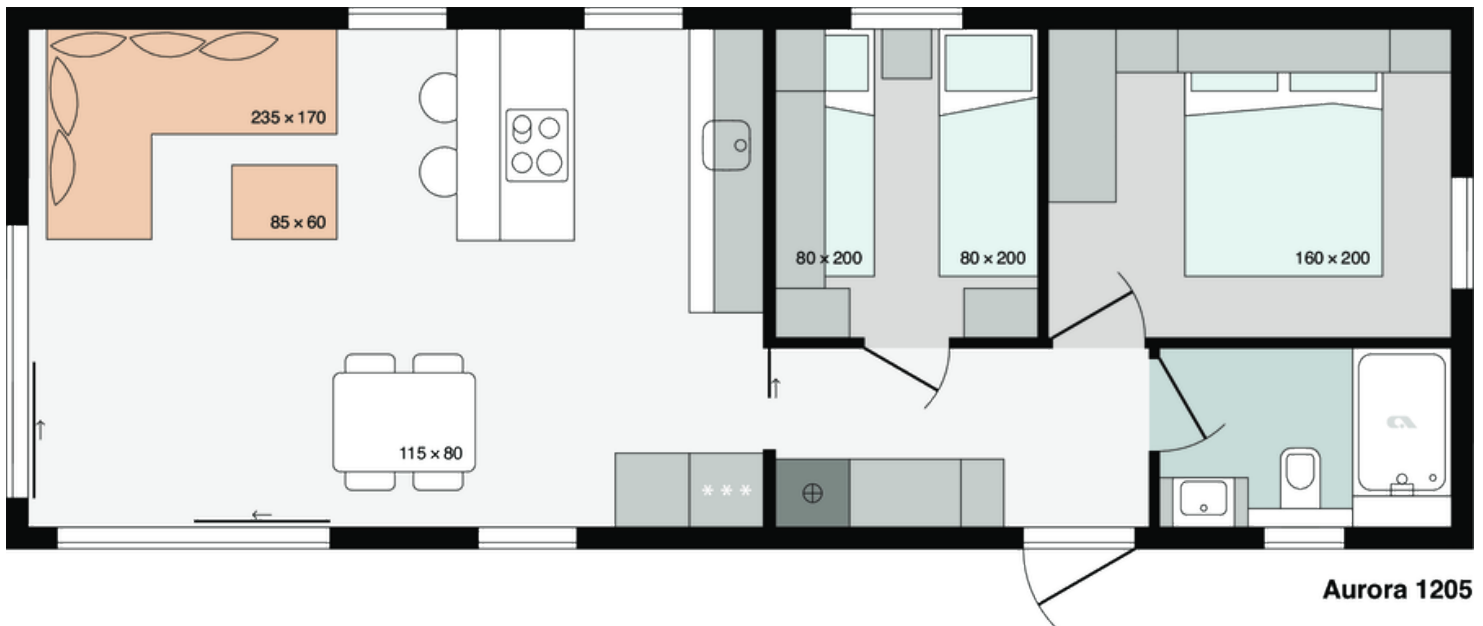
Aurora 1205

Facade 2:



Aurora 1205

Layout:



Aurora 1205

A1 GENERAL

Area	52
Number of beds	4+1
Number of bedrooms	2
Number of bathrooms	1
Length	12,00
Width	4,3
Height	3,45

B1 CHASSIS

100% Galvanized Steel Chassis	X
Triple inflatable wheels	X
Detachble hook	X
Leveling Feet	X

B2 FLOOR

Bitumen floor protection	X
Vynil flooring	X
Structural Insulated Panels SIP Floor	X, 100mm

B3 EXTERIOR WALLS

Structural Insulated Panels SIP	X, 100mm
Cladding: Adria PVC Whiteline horizontal	O
Cladding: Adria PVC blackline horizontal	O
Decorative attic: Compact White F2010 Malibu	O
Decorative attic: Compact Anthracite F2297 Terril	X
Cladding: Larchwood Vertical	O
Cladding: Larchwood Horizontal	O
Cladding: Larchwood Blackline horizontal	X
Corners: Anthracite	X
Cladding: Compact anthracite F2297 Terril	X
Cladding: Compact white F2010 Malibu	O

B4 WINDOWS AND DOORS

PVC anthracite windows and doors with termopan glass	X
Windows and doors with higher insulation	X

Tinted windows in bathrooms	X
Swing entrance door with security glass	X
PVC balcony door in kitchen with security glass	X
PVC balcony door in living room with security glass	X
Door holder	X
Mosquito nets on all windows - anthracite	O
Master cylinder	O
Master key	O

B5 ROOF AND CEILING

Single-pitched Roof with integrated gutter	X
Roof construction class C (300 kg/m ²)	X
PVC roof	X
Roof Colour: Anthracite	X
Roof insulation glass wool 100 mm with	X
Roof insulation glass wool 160mm	O
Flat higher ceiling in all rooms 240 cm	X
Vertical draining pipes	X

C0 INTERIOR

Textile Combination - STANDARD	GRAPHITE 2022
Furnishing Decor	GRAPHITE 2022
Dimout curtains	X
Daily curtains	O
Cushions in bedrooms	O
Double interior separation walls	X
Interior doors 40 mm with ALU doorframes	X
Door stopper	X
Metal doorhooks	X
Soft close for furniture	X

C1 LIVING ROOM

Designer comfortable sofa extendable	O
Footstool dinette sofa 850 x 600 mm	O
Dinning table	X
Coffee table	O

Chairs	X
TV cupboard with luggage rack	X
Open Wardrobe	X
Hangers	X
Mirror	X
Fire extinguisher	O
Fire blanket	O
Smoke detector	O
Decorativ wall in living room	X
Wall shelf over the sofa	X
Barstools	X

C2 KITCHEN

Glas ceramic hob with 4 burners	X
Induction hob with 4 burners	O
Extractor hood	X
Stainless steel sink without drainer	X
Built-in bin separator 16L	O
Built-in frdige with freezer 270 l	X
Built-in dishwasher 450 mm	O
Built-in electrical oven	O
Built-in microwave oven	O
Kitchen backsplash: White wall panel	X

C3 MASTER BEDROOM

Double bed with slatted bed base	160 x 200
Foam mattresses (25 kg/m ²)	X
Foam mattresses (35 kg/m ²)	O
Wooden bed upholstery	X
Ottoman upholstered bed	O
Ottoman bed with wooden upholstery	O
Upholstered bed	O
Upholstered headboard	X
Bedside tables	X
Wall shelf over the bed	X

Wardrobe	X
Hangers	X
Mirror	X
Safe in master bedroom	O

C4 CHILDREN BEDROOM

Single beds with slatted bed base	80 X 200
Foam mattresses HR35	O
Foam mattresses PN25	X
Upholstered headboard	X
Wooden bed upholstery	X
Upholstered bed	O
Bedside tables	X
Wall shelf over the bed	X
Cupboards over the bed	X
Hangers	O
Mirror	O
Decorative wall panel above shelve	X

C6 BATHROOM

Shower cabin with low profile tray	80 x 120
Shower sliding doors with security glass	X
Shower decorative PVC wall	X
Shower tower with mixer tap	X
Shower rail with adjustable sliding shower holder and rain shower head	X
Wash-stand with mixer tap	X
Cheramic toilet with toilet seat	X
Built-in toilet tank with saving function	X
Toilet roll holder	X
Hangers	X
Hairdryer	O
Wahsing maschine 450 mm	O
Mirror	X

D1 WATER AND GAS

External connector to water facilities with	X
PVC water pipes Speedfit®	X
Central waste water outlet	O
Internal access to water heater	X
Electrical water heater 80l	X
Electrical water heater 100l	O

D2 ELECTRICITY

Black flush installations, sockets and switches	X
Awning LED light	X
External connection 32A, 250V, 2P+E	X
External socket anthracite	X
External socket under chassis	O
Built-in ceiling spot LED lights in all rooms	X
Reading LED lights in all rooms	X
Ambiental LED lightning in living room and sleeping rooms	O
LED lightning in kitchen	X
Preinstallation for Airconditioning	X
Key lock	O
Airco Card	O
Airco sensors for entrance door	O
Airco sensors for all windows except bathrom	O
TV socket	X
Additional TV and aerial socket in master bedroom	O
USB socket	O
UTP socket	O

D3 MULTIMEDIA

TV holder	O
TV holder with double fold function	O
LED TV 32 inch	O
Adria Bluetooth sound system	O

D4 HEATING AND COOLING

Air-conditioning - mono split	O
Electrical heater in living room	O

Electrical heater in bedrooms	O
Electrical towel heater in bathroom	X
IR heating system	X
Gas central heating system with radiators	O
Electrical underfloor heating system Ebecco ® in all rooms	O
Electrical underfloor heating system Ebecco - only bathroom	O
Fan wit humidity and light sensor in bathroom	X
Insulated water pipes with electrical heating	X
Insulated water pipes with electrical heating according to EnEV	O
Electrical towel heater in toilet	O
Electric central heating system Eloblock with radiators	O

Legal Notice

The information on this website is provided "as is" and without warranty of any kind, expressed or implied, including (but not limited to) any implied warranties of merchantability and non-infringement of third party rights. While the information provided is believed to be accurate, it may include errors or inaccuracies. In no event shall Adria Home be liable to any person for any special, indirect or consequential damages relating to this material, unless caused by gross negligence or intentional misconduct. The purpose of this website is illustrative. The website may show visuals which may include some elements not belonging to the standard equipment or portray products which may not be available in all markets. Products may change in terms of technical specification and commercial details and in relation to specific regulations. You are advised to always contact your selected Adria representative to obtain all detailed information prior to purchasing.

Copyright

Copyright © Adria Home Ltd., ?rnomej, Slovenia 2019-20. All rights reserved. The text, images, graphics, sound files, animation files, video files, and their arrangement on the Adria Home website are all subject to copyright and other intellectual property protection. These objects may not be copied for commercial use or distribution, nor may these objects be modified or reposted to other sites. Adria Home website may contain images whose copyrights are attributable to third parties.



Adria Home Ltd.
Kanižarica 41, SI-8340 ?rnomej, Slovenija, Tel: +386 (0) 7 35 69 100, E-mail: info@adria-home.com
adria-home.com , www.adria-holidays.net

#AdriaHome
#AdriaGlamping

