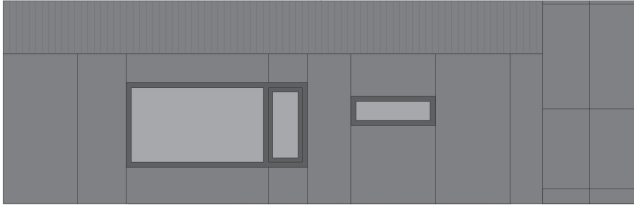


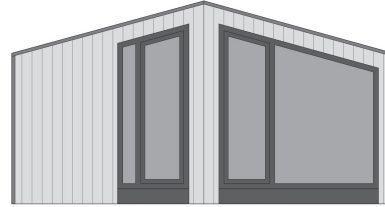


ALPLINE 853 A01

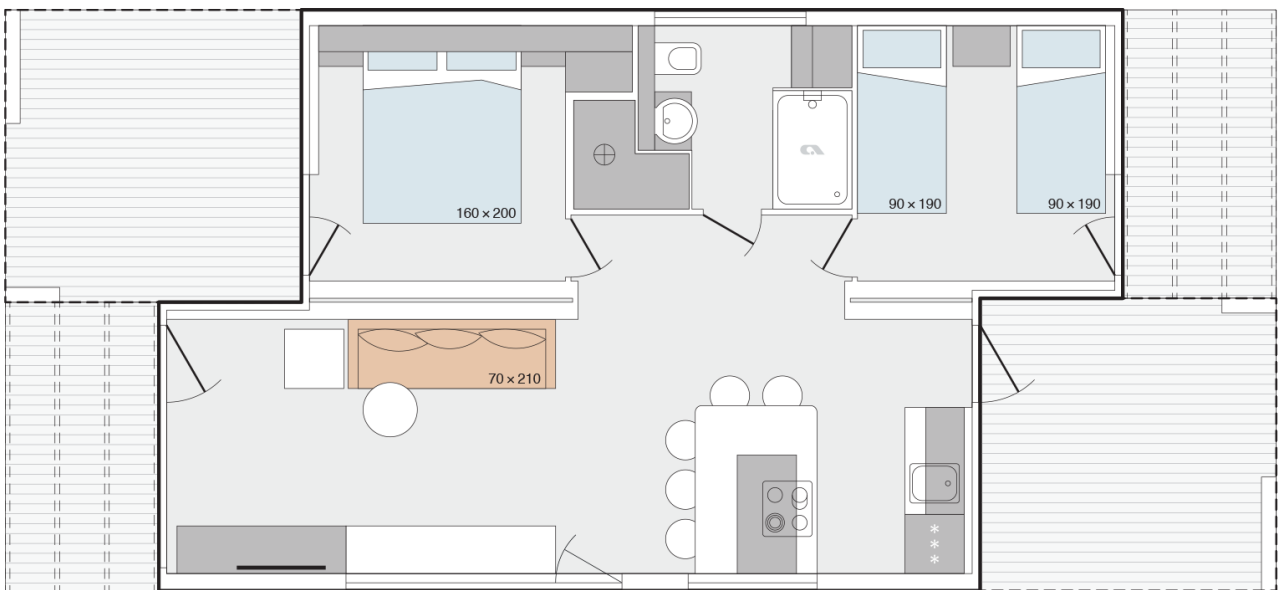
Facade:



Facade 2:



Layout:



Alpline

A1 GENERAL

Area	34
Number of beds	4
Number of bedrooms	2
Number of bathrooms	1
Length	8,5
Width	3,0
Height	3,4

B1 CHASSIS

100% galvanised steel tube 100/100/5 mm	X
---	---

B2 FLOOR

Structural Insulated Panels SIP Floor	X
Vynil flooring	X

B3 EXTERIOR WALLS

Structural Insulated Panels SIP	X
Frontal Facade: Larchwood vertical	X
Cladding: Facade panels Plano	O
Cladding: Facade panels Rombo 40	O
Cladding: Larchwood Vertical	X
Cladding: Double covernig Eternit	O
Cladding: Facade panels Swisspearl	O

B4 WINDOWS AND DOORS

PVC anthracite windows and doors with termopan glass	X
Tinted windows in bathrooms	X
PVC balcony door in bedroom with security glass	X
PVC balcony door in children bedroom wizh security glass	X
Door holder	X
Mosquito nets on all windows - white	O
Rolo shutters on bathroom windows	O

B5 ROOF AND CEILING

Roof plates Swisspearl	O
------------------------	---

Roof tile Qube Acoustic	X
Roof Slates Double Covering Eternit	O
Cathedral ceiling in all rooms 180/250 cm	X
Duo-pitched Roof	X
Structural Insulated Panels SIP Roof	X
Roof construction class C (350 kg/m ²)	O
Roof construction class E (600 kg/m ²)	X

C0 INTERIOR

Textile Combination - STANDARD	MOOD
Dimout curtains	O
Cushions in bedrooms	O
Notranje pregradne stene 56 mm	X
Interior doors 40 mm with ALU doorframes	X
Door stopper	X
Metal doorhooks	X
Soft close for furniture	X
Furnishing Decor	NORDIC

C1 LIVING ROOM

Wall decoartiv cladding	O
Mirror	X
Fire extinguisher	O
Fire blanket	O
Smoke detector	O

C3 MASTER BEDROOM

Double bed with slatted bed base	160x200
Foam mattresses (25 kg/m ²)	X
Foam mattresses (35 kg/m ²)	O
Topper for mattresses	O
Ottoman bed with wooden upholstery	X
Upholstered headboard	O
Bedside tables	X
Cupboards over the bed	X
Wardrobe	X

Hangers	X
Mirror	X
Safe in master bedroom	O

C4 CHILDREN BEDROOM

Single beds with slatted bed base	90x190
Loft bed	O
Foam mattresses PN25	X
Foam mattresses HR35	O
Topper for mattresses	O
Ottoman bed with wooden upholstery	X
Upholstered headboard	O
Bedside tables	X
Cupboards over the bed	X
Wardrobe	X
Hangers	X

C6 BATHROOM

Shower cabin	120x80
Shower PVC wall	X
Shower tower with mixer tap	X
Shower rail with sliding shower holder	X
Shower rail with adjustable sliding shower holder and rain shower head	O
Wash-stand with two doors and mixer tap	X
Mirror with shelf	X
Mirror	X
Extra shelves	X
Built-in toilet tank with saving function	X
Towel holder	X
Toilet roll holder	X
Hangers	X
Hairdryer	O
Washing machine 450 mm	O

D1 WATER AND GAS

External connector to water facilities with PVC water pipes Speedfit®	X
Internal access to water heater	X
Electrical water heater 80l	X

D2 ELECTRICITY

External connection 32A, 400V, 3P+N+E	X
Awning LED light	X
External socket	X
Ambiental LED lightning in living room and sleeping rooms	X
Airco sensors for entrance door	O
Airco sensors for all windows except bathrom	O
Additional TV and aerial socket in master bedroom	X
USB socket	X
UTP socket	O

D3 MULTIMEDIA

TV holder	O
TV holder with double fold function	O
LED TV 32 inch	O
Adria Bluetooth sound system	O

D4 HEATING AND COOLING

Air-conditioning - mono split	O
Electrical heater in living room	O
Electrical heater in bedrooms	O
Electrical towel heater in bathroom	O
IR heating system	O
Electrical underfloor heating system Ebecco ® in all rooms	O
Electrical underfloor heating system Ebecco - only bathroom	O
Ventilation with recuperation	X
Insulated water pipes	X

Legal Notice

The information on this website is provided "as is" and without warranty of any kind, expressed or implied, including (but not limited to) any implied warranties of merchantability and non-infringement of third party rights. While the information provided is believed to be accurate, it may include errors or inaccuracies. In no event shall Adria Home be liable to any person for any special, indirect or consequential damages relating to this material, unless caused by gross negligence or intentional misconduct. The purpose of this website is illustrative. The website may show visuals which may include some elements not belonging to the standard equipment or portray products which may not be available in all markets. Products may change in terms of technical specification and commercial details and in relation to specific regulations. You are advised to always contact your selected Adria representative to obtain all detailed information prior to purchasing.

Copyright

Copyright © Adria Home Ltd., ?rnomej, Slovenia 2019-20. All rights reserved. The text, images, graphics, sound files, animation files, video files, and their arrangement on the Adria Home website are all subject to copyright and other intellectual property protection. These objects may not be copied for commercial use or distribution, nor may these objects be modified or reposted to other sites. Adria Home website may contain images whose copyrights are attributable to third parties.



Adria Home Ltd.
Kanižarica 41, SI-8340 ?rnomej, Slovenija, Tel: +386 (0) 7 35 69 100, E-mail: info@adria-home.com
adria-home.com , www.adria-holidays.net

#AdriaHome
#AdriaGlamping

